

February 2025



Bottisham

THE   
*Cresset*

News, views and what's on, in and around Bottisham



# BOTTISHAM NEIGHBOURHOOD PLAN

## INTERIM RESIDENTS' CONSULTATION

### RESIDENTS - HAVE YOUR SAY

A Neighbourhood Plan is a key way for the community to influence future development of their community - not just in housing, but in many aspects of the life and environment of the village. Once created, it will have a significant influence on the development of the village into the future.

Following a village-wide survey last year, a resident's working party are in the process of finalising a draft plan.

We would like to share and discuss this draft plan with you. Your feedback will be incorporated into the final plan.

This plan will then go out for consultation again before submission to East Cambs District Council.

This will be a "drop-in" consultation where you can interact informally with the members of the working group on the range of different areas they are each working on.

**PLEASE COME ALONG AND  
HAVE YOUR SAY**

\*\*\*

### INTERIM CONSULTATION

**Location:**  
Bottisham Sports &  
Social Club

**Date & Time:**  
Saturday 1st March

Time: 14.00-19.00

**Hi** - February already, the winter half done and Christmas a distant memory. Never mind, once we get over Valentine's day it will soon be Easter and Spring just round the corner!



Our cover this month is a sight known to all, but in December it was demolished by those gale force winds we had. However, I am delighted to say it is back where it belongs due to the work of that stalwart Steve Allen, who wrote to me.

.....

**Hi Peter, Happy New Year**

Readers may be interested in the repair of the village sign after the storm blew it down in December. I carried out the repair volunteering my services to the parish council.

Tony Hoodles, who is carrying out the development at Ranks Garage kindly gave his time and forklift to put the very heavy sign back onto the oak post. There is still some restoration required to the sign that I intend to carry out in the spring.

The clock on the church likewise suffered from the storm in December. The face, facing the High Street, has become detached from its wrought iron metal fixing. In windy weather the face blows outwards jamming the hands which stops the clock. Considering it's been up there since 1876 it's not done too badly. Another item of work to be done. A little bit more involved, due to height.

On November the fifth last year it's been 33 years of winding the clock every Sunday and flying the flag when needed.

*Steve Allen*

.....

**A big thank you to him and for all the other things he does.**

Separate thanks also to the Parish council for instigating the Xmas tree with lights on the triangle. It turned out to be a great attraction. However, it was all of you, who came out and turned it into the success it was, on what was a horrendous night of wind and rain.

The result was The Bell was jammed, which was great for the new tenants. Sounds like that one should be a definite for the calendar next year.

The magazine this month has several key points to take note of. The first is the detail about the neighbourhood plan. It cannot be ignored that this is the only way that we as residents can best have our views heard when it comes to planning and what development takes place in our village. It does not guarantee total control, but at least it allows out voice to be heard. The next step is for us to have the opportunity to see what has been put together so far by the group that has been working on it, before the fine-tuned plan is completed.

That opportunity comes at the open consultation meeting taking place on the 1st March at the Social Club all afternoon. Don't miss it.

Public Transport Matters highlights the planned new bus service from Burwell to Addenbrookes, through Bottisham. It almost made it to the starting gate but has had to be

*(continued on page 2.)*

*(continued from page 1.)*

reviewed after Ms. Reeves latest budget added unplanned costs. Not a showstopper, but another delay.

All the usual articles are here and lots of useful information to be had.

Bird Brain this month tells us the story of one of my favourite birds that come into the garden in a chattering 'gang', (The only way to describe it!). And that is the long-tailed tit, or LTT, as Gerry describes it. A great read.

Finally, Tony at E.C. Autocare tells me that they will be at the High St. site until at least April.

**Enjoy this month's offering and more from me next month.**

*Peter*

---

## *News From Holy Trinity Church Bottisham*

---

What a joy it was to see the church full on several occasions over the Christmas period. The enthusiasm of the Primary School Children, who with their parents and teachers packed the church on December 12th was a joy to behold. We were most grateful to our Curate Rev Rhona McEune for playing the organ on this occasion. Our own Carol service on 22nd December was also enjoyed by a packed church and we are most grateful to Sarah Maxwell who led this service as well as the organ playing of Richard Ayres accompanying the hymns along with violin and flute players. Our Holy Communion Service on Christmas Eve was also well attended and seems to be particularly popular with those who do not wish to go out late in the evening for the traditional 'midnight mass'. All these occasions were greatly enhanced by the splendid display of winter flowers and greenery displayed by the flower arrangers as well as the candle lights on several evenings. I am delighted to report that numbers have held up well for our first Holy Communion Service of the year where one of the Benefice Lay Ministers, Mike Procter preached on The Epiphany, bringing some new insights to the story of the 'Three Wise Men'.



The New Year brings about the task of organising working parties and grant application preparations for the huge task of the restoration of the walls and roof of our beautiful church. A meeting has been arranged with Holly Robinson, who is the Historic Church Buildings Support Officer at Ely Diocese and who will be able to give valuable advice regarding the writing specifications for the architect shortlisting, as well as the procedures for applying for National Heritage Lottery funds. However, we need to set up a small working party – are there any out there who, although not regular worshipers, would be willing to help us with this important task?

We are starting to organise a return of our Saturday Morning 'Coffee and Cake Concerts' for the warmer months. The first will take place on Saturday 29th March at 10.30am when Sarah Maxwell, who has a beautiful soprano voice, will give a concert of popular as well as not so well-known songs accompanied by John Marsh.

# Contents

Services in the Anglesey Benefice.....5	Public Transport Matters.....25
Bottisham Community Library Association.....5	Highways and Byways: Travelling and Parking Near Road Junctions .....27
Parish Council Report.....7 & 9	Bottisham Adult Learning Association (Bala).....29
Parish Council Vacancy .....11	Bottisham Airfield Museum Group (BAMG).....29
District Councillors' Report.....13	Bottisham WI .....31
Planning Notes .....13	Bottisham and District Gardening Club.....33
Bottisham Community Sports & Social Club.....15	Anglesey Group Mothers' Union....33
Why Switch to Full Fibre Broadband? .....17	Village Litter Pick.....35
News from Bottisham Medical Practice Patients' Participation Group .....17	Anglesey Abbey .....37
Bottisham Bird Brain.....19 & 21	CH __CH .....39
Cambridgeshire Fire & Rescue Service.....23	

We have a small number of willing helpers who clean the church and keep it tidy – the rota comes around about twice a year. We are looking for one or two more to help with this task. If you are willing to help please contact Helen Cole (01223 812573) who kindly organises the cleaning rota.

You may have noticed that the church clock has stopped. This is due to dislodgement of the clockface from the church wall in the wind which is then catching on the hands and jamming them. We have immediately put in hand estimates for scaffolding to reach the clock and our esteemed craftsman Steve Allen has kindly agreed to fix the problem.

Our Services in February follow the familiar pattern: the monthly Holy Communion Service on the first Sunday of the month (February 2nd) led by our Vicar Max Osborne assisted by our curate, the short Compline by Candlelight held on Zoom on the first Wednesday of the month (February 5th), led by Sarah Maxwell, and our Morning Prayer on the third Sunday (February 16th) also led by Sarah.

We would love to see you at one of our services and to chat over refreshments afterwards.  
*Stuart Field, Churchwarden*

## Reconnect to your life

Whatever your hearing difficulty, angli-EAR Hearing uses the most up-to-date tests and equipment to find the best solution for you.

Where to find us:  
Audiology House (Cambridge)  
15 Woollards Lane  
Great Shelford  
Cambridge  
CB22 5LZ



Book your  
**FREE**  
ear health  
check today

**Independent audiology  
experts you can trust**



Hearing  
Assessments



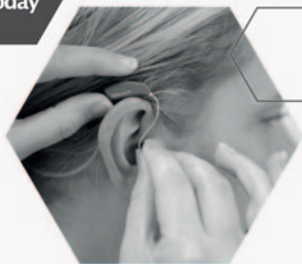
Ear Wax  
Removal



Hearing  
Aids



Tinnitus  
Solutions



**BOOK ONLINE**

[www.angliearhearing.co.uk](http://www.angliearhearing.co.uk)



**01223 661399**

[info@angliearhearing.co.uk](mailto:info@angliearhearing.co.uk)

## *Services in the Anglesey Benefice*

Sun Feb 2nd	9am	Online service on Zoom
	10.30am	Holy Communion – Bottisham
	4pm	Village Worship - Quy Village Hall
Wed Feb 5th	8pm	C by C (a short contemplative service) – online via Zoom
Sun Feb 9th	9am	Online service on Zoom
		Holy Communion - Quy
	10.30am	Family Worship – Swaffham Prior
Sun Feb 16th	9am	Online service on Zoom
		Morning Prayer - Quy
	10.30am	Holy Communion - Swaffham Bulbeck
		Morning Prayer – Bottisham
Sun Feb 23rd	9am	Online service on Zoom
	10.30am	Holy Communion (BCP) - Swaffham Prior
Every Thurs	10.30am	Holy Communion - Lode

---

Please check the Church notice board for any changes to these details; or email [admin@angleseygroupparishes.co.uk](mailto:admin@angleseygroupparishes.co.uk), which is also the address to request the Zoom link. You are very welcome to attend any of these services.

---

## *Bottisham Community Library Association*

February and it's still winter and it can still be quite cold. At the library we have plenty of cosy crime for you to choose and curl up with somewhere warm. There are the very popular Richard Osman's books, the Thursday Murder Club series; the Reverend Richard Coles', Death in the Parish etc, and James Runcie's mystery series set in Grantchester, also involving a vicar. My personal favourites are the Devon mysteries by Stephanie Austin with her main character, Juno Browne, and the Dales Detective series, 'Date with...' by Julia Chapman. The last in the series, 'Date With Destiny', is due to be published in March.

Don't forget if you can't find part of a series you are reading in the library you can reserve a copy from another library in the County at a cost of 50p. Children can reserve books free of charge. A bargain!

Our annual fundraising event for the Library is the Quiz Night on March 8th at Bottisham Sports and Social Club. Tables can be booked at the Library.

**Lego Club** will be on February 15th at 10.30 but there will be **no Storytime** this month. Younger children will enjoy our collection of Duplo.

The date for the **Mobile Library** visit to Downing Close is **Thursday February 27th.**  
**Keep Reading!**

# SG LAW

Plumbing & Heating Services

01223 803444

hello@sglawplumbing.co.uk

www.sglawplumbing.co.uk

BATHROOMS

HEATING

PLUMBING

SERVICING



## Foot Works FHP Ltd

MCFHP MAFHP CPD NT

Mobile foot health professional in the comfort of your home

### Services include...

Nail cutting / filing  
Corns / Callus / Verruca  
Ingrowing toenails treatment  
Thick nail reduction  
Fungal infection  
Dry/Hard skin/Special treatment for cracked heels  
Assessment of the diabetic foot

Weekends Available Mobile:07708 386396

E-Mail: wilmasonia@hotmail.co.uk



Insured, Accredited and DBS checked

Member of the British association of the foot health professional



# *Parish Council Report*

**The next full council meeting will be held by on Monday 3rd February 2025, 7.30pm at the Poppy Room, Bottisham Sports and Social Club.** All Parish Council meetings are open to the public. Please note that the clerk to the council does not keep regular office hours. Replies to emails and phone calls will be attended to as soon as is practicable. Details of upcoming meetings and Councillor Details are available from the Parish Council Noticeboard and from the website [bottisham-pc.gov.uk](http://bottisham-pc.gov.uk).

## **COUNCIL FINANCES**

The Parish Council have been reviewing the expected budget for 25/26 and the final version was approved at the Full Council meeting on 6th January 2025. In order to meet the financial obligations of the Parish, a Precept request is submitted to East Cambridgeshire District Council (ECDC) each year. This Precept is raised via the Council Tax demands made by ECDC and includes monies requested from the County Council, District Council, Parish Council, and other services. The Council is pleased that the proposed precept of £70771 required only a 1.2% increase in precept over last year. The impact on a Band D equivalent property will be an increase of 8p per month. At present the Parish Council have no information relating to any increases by other services other than what has been in the press.

## **BUSES**

The Parish Council received information directly after their last meeting, relating to the proposed new T4 & T5 bus services. Unfortunately, as has been widely noted in the press, the successful tender supplier wishes now to withdraw from the service. This means that the procurement process must start again, which obviously will create a time delay. We have had some reassurances from the Combined Authority that the proposed routes are still viable, but that delays are now expected until May 2025. This is not the news that we were hoping for, as the Parish Council welcomed the introduction of the new routes as soon as possible. We will continue to keep residents informed of any developments as they occur.

## **NEIGHBOURHOOD PLAN RESIDENT'S CONSULTATION**

A Neighbourhood Plan is a key way for the community to influence future development of their community - not just in housing, but in many aspects of the life and environment of the village. Once created it will have a significant influence on the development of the village into the future.

Following a village-wide survey last year, a resident's working party are in the process of finalising a draft plan, that we would like to share and discuss with you. Your feedback will then be incorporated in the final plan - which again will be consulted on with all residents before submission to East Cambs. This will be a "drop-in" consultation, where you can interact personally and informally with the members of the working group on the range of different areas we are working on.

The Poppy Room at the Sports & Social Club has been booked for the consultation on 1st March between 14.00-19.00. Please could I ask you to put this in your diary and endeavour to join us to have your say?

*Continued on page 9*

# D.S. FREEMAN

## Painters & Decorators

- Residential & Commercial
- Interior & External
- Fully Insured
- All Aspects Undertaken

duncanfreeman@hotmail.co.uk

**Tel: 07960 769176**

Longmeadow

## Morgan's Hairdressers

01223 811646



30 years Experience

Styling for all the family

Including perming

And colouring

Specialist Colours

Opening hours are:

Tuesday to Friday 9 am to 5 pm (weds late opening to 8 pm)



**E.J. DENSTON CARPENTRY**

Kitchens & Construction

- Carpentry & Joinery
- Kitchen Projects
- Renovations & Construction



Tel: 01223 813279

Mobile: 07711578687

[www.eddenstoncarpentry.com](http://www.eddenstoncarpentry.com)

[eddenstoncarpentry@gmail.com](mailto:eddenstoncarpentry@gmail.com)

## Carpentry Services

# TONY MARTIN

Over 30 years experience

***Any carpentry jobs  
undertaken — BIG or small***

Call Tony  
for a free estimate

**Tel: 01223 812786**

**(Bottisham)**

**Mobile: 07767475987**

*Continued from page 7*

## **KINGSWAY SOLAR/SIX OAKS**

The Parish Council have been notified of a statutory consultation for a Nationally Significant infrastructure project (NSIP) for a proposed solar farm located on parcels of land around the areas of Balsham, West Wrattling, Weston Colville, and Weston Green in Cambridgeshire. This particular solar farm would be the largest in the UK and will have an operational capacity of 500MW and contain battery storage. At present the proposals are in the pre-application stage, but the developers are required to produce an Environmental Statement to be submitted with any application for a Development Consent Order. It is a requirement for Statutory Consultees to have the opportunity to raise issues that they feel should be considered. Although the site is located away from the main residential areas of our Parish, there will be a pylon connection corridor which will terminate at Burwell substation and which may cross land within the Parish boundaries. The Parish Council will be sending in a response to the consultation to ensure that they are notified of any future consultations and factors that are important for the Parish are considered in the scoping opinion. The Parish Council also agreed at their last meeting that they would be supporting other parishes who going to be more affected by the proposed plans. More information about the proposals can be obtained via <https://kingswaysolarfarm.co.uk/proposals/>.

As previously reported in the last edition of the Cresset, the Community Benefit Agreement for the Six Oaks Solar Park has now been signed by the developer, the three impacted Parish Councils and the landowner. The Parish Council is now in possession of a hard copy of the agreement. It is hoped that the site will start producing energy in 2027, at which point the Parish will receive some financial benefit from the scheme.

## **VILLAGE SIGN REPAIR**

As well as disrupting our Christmas celebrations, Storm Darragh also blew down our attractive village sign (opposite Holy Trinity). Investigation revealed that the base had rotted. We are very grateful to a resident, Mr. Stephen Allen, who has voluntarily reset the post in a more water-resistant base. The sign itself is very heavy, and we are grateful for the support of the Billingfords site manager (currently developing the previous Ranks site), who brought over a low-loader to help reposition it. The sign itself does require some repainting – which it is hoped can be completed in due course.

Again a big thank you to Stephen for his support of the village in this way.

## **ADMINISTRATION**

The Parish Council have undertaken a major project to input all of the village cemetery burial records from the past over 120 years into a new computerized system – which will much improve our management of the cemetery going forwards. This has been accomplished by employing an individual on a temporary basis. However, it has been recognized that additional admin support is routinely required for the Parish, due to the increasing workload and the need to remain compliant with legislation. Therefore, the Parish Council are seeking to recruit an Administration Assistant for 3 hours a week to assist the Clerk and provide cover when necessary. There is an advert in this magazine for the post and more information is available from myself on the details below.

If you need any further information relating to anything raised in this report or anything you wish to bring to the attention of the Parish Council, then please do not hesitate to contact me via email, [clerk@bottisham-pc.gov.uk](mailto:clerk@bottisham-pc.gov.uk) or via phone 07369248998.

*Sam Chambers-Turner - Clerk to the Council*



# Are You Paying Too Much For Your Medical Insurance?

## Independent And FREE Advice

- **Switch to an alternative scheme** – If you are currently insured, switching to a competitor can mean ***substantially lower rates***
- **Pre-existing conditions covered** – It is often possible to include pre-existing medical conditions currently covered by your existing provider
- **Improve your coverage** – We can frequently improve your cover whilst also lowering the cost of your premium
- **Complexities of different schemes** – In many cases, people are over insured – we can ensure you are covered with a scheme that meets your individual needs and requirements
- **Full cover for cancer treatment** – Many policies do not cover cancer in full – we are able to advise on your current level of coverage



For further information, please call Simon Lively at  
M&L Healthcare Solutions -

**FREEPHONE 0800 145 5838 or 07710 993990**

Email: [simon.lively@mlhs.co.uk](mailto:simon.lively@mlhs.co.uk)

quoting ref: **The Cresset**

M&L Healthcare Solutions Ltd is authorised and regulated by the Financial Conduct Authority. (FCA Reference number 943748)



## **BOTTISHAM PARISH COUNCIL**

### **VACANCY**

#### **ADMINISTRATION ASSISTANT TO CLERK**

Bottisham Parish Council are seeking a proactive, detail orientated & flexible individual to support the Parish Council & Clerk.

The main role would be to support the Clerk, as directed, with day-to-day administration tasks including data entry, filing & liaising with funeral directors.

Other key responsibilities include:

Being a point of contact for public enquiries

Ensuring the Parish Council noticeboard is up to date

Providing general office handling inward & outward mail

Ensuring records, filing systems & burial records are kept up to date

In collaboration with the Clerk be involved in parish events and/or meetings

Deputising for the Clerk during absence (as directed by Chairmanship)

The successful applicant must have good communication, administrative and literacy skills as well as a good IT skill set, as they will be interacting with the public, Councillors, and other organisations in both verbal and written formats.

The hours are 3 hours a week managed flexibly between 09:00 – 17:00

Initial salary is £12.63 per hour (NALC national salary scale SCP 7)

**Please send a CV by email to Parish Clerk:**

**[clerk@bottisham-pc.gov.uk](mailto:clerk@bottisham-pc.gov.uk)**

**Closing date for applications: 28<sup>th</sup> February 2025**

If you respond to this advert & you do not hear back from us within 3 working days post-closing date then you will unfortunately have been unsuccessful on this occasion.

The parish council is an equal opportunity employer.

# HARRISONS OF BURWELL LTD

**Plumbing and Heating**

*FREE ESTIMATES GIVEN*

Gas Boiler Servicing

**Clarence House, 7 Ness Road, Burwell, Cambs CB25 0AA**  
**Telephone: Newmarket 01638 742873 - Mobile 07932 773515**

**email: [harrisonsofburwell@gmail.com](mailto:harrisonsofburwell@gmail.com)**

Gas Safe Registered

# HAYDEN

**THE CLEANING SPECIALIST**

WOULD YOU LIKE YOUR CARPETS  
OR UPHOLSTERY CLEANED?

HAYDEN IS LOCAL TO THE AREA,  
OFFERING FREE QUOTATIONS  
AND ADVICE

WE ALSO CLEAN WINDOWS WITH  
OUR NEW REACH AND WASH  
SYSTEM OR TRADITIONAL, YOUR  
CHOICE

Merrywood  
8 Lode Rd. Bottisham CB25 9DJ  
01223 813766 or 07919561665  
Email: [hayden.woodruff@btinternet.com](mailto:hayden.woodruff@btinternet.com)

## k-domestic electrical solutions



Complete installations & rewires

Small and large alterations

Lighting

Internal & External work

PAT testing

Periodic Inspection & Reports

Full Inspection, Testing,  
Verification & Certificate issue

LED

Under Floor Heating

Voltage Optimization

your **local** electrical service of choice and recommendation

**Karl Howe**

**01638 610438 M: 07541 008613**

Email: [enquire@k-elecsolutions.com](mailto:enquire@k-elecsolutions.com) Website: [www.k-elecsolutions.com](http://www.k-elecsolutions.com)

Fully qualified Part P and 17th Edition

**City &  
Guilds**  
Qualified



# *District Councillors' Report*

**NOT MUCH HAS HAPPENED AT THE COUNCIL IN DECEMBER.**

## **Extraordinary Council on 11 December**

Due to equal numbers on both political Groups, it was resolved that the four main Committees (Finance & Assets, Licensing, Operational Services, and Planning) would have 12 members with six from each Group, and that other committees would be increased by one to make the membership even numbered.

The four main Committees have almost half the number of ECDC members, and both Charlotte and John supported the motion that was seconded by the Independent that the membership ought to be only ten. With the ruling that members of the F&A Committee cannot be members or substitutes on the Audit Committee, it means that all 14 members of each group are members or substitutes on these two committees.

Furthermore, it was resolved that the Chairs and Vice-chairs of each Committee would be elected at the special Council meeting in May, as is done by other Councils in Cambridgeshire.

The Ward Surgery will be at Passage Hall, Lode, on **Wednesday 26 February 2025** from half past six to half past seven.

*Cllrs Charlotte Cane MP and John Trapp*

## *Planning Notes*

### **a) New applications:**

23/00017/DISA or PP-13647244, Site South of 2 Parsonage Barns Bottisham Cambridgeshire CB25 9EG. To discharge Condition 3 (external materials (roofing) of decision dated 8 November 2024 for 23/00017/FUL Erection of outdoor covered storage area and extension to existing building to form staff welfare facilities and associated works.

**Copy deadline for the next issue is 14 February.**

*Please send material to the editor at [BottishamCresset@gmail.com](mailto:BottishamCresset@gmail.com)*

Have you thought of advertising your business in *The Cresset*?  
**Email the Editor for details: [BottishamCresset@gmail.com](mailto:BottishamCresset@gmail.com)**



My love for dogs  
An alternative to Kennels

A personal, caring approach to dog care.

In our home, your dog will receive two hour-long walks every day as well as treats, socialisation with other dogs and the administration of any required treatments.

- Fully insured and police checked
- Licensed by Sth. Cambs. District Council.

For further details call Amanda on  
 07903 806750

Based In Steeple Morden near Royston.

# C & BLINDS C

Specialists in Blinds  
 Any Size, Any colour

Vertical Blinds  
 Roller Blinds  
 Venetian Blinds  
 Wooden Blinds  
 Roman Blinds

Repairs

Free estimates

01223 211171  
 07761 262070



# ONG

“Successful entrepreneurs are givers and not takers of positive energy.” ANONYMOUS

**codge.com**  
**info@codge.com**  
**01449 675 548**

Design & Origination • Website Design & Maintenance • Email Marketing • Digital Publishing  
 • Logo Creation • Cartoons & Illustrations • Theatrical, Product Photography & Retouching •  
 Business Stationery • Promotional Flyers & Posters • Newsletters & Magazines • Programs &  
 Catalogues • Books & Brochures • Calendars • Reports • Signage, Displays & Banners •  
 Personal & Wedding Stationery • Mac Training



# We would love to see you at Bottisham Community Sports & Social Club



## OPENING HOURS

Weekdays 5pm to 11pm  
Saturday 12 noon to 11pm  
Sunday 12 noon to 9pm

**Non-Members are always very welcome.**  
**If you would like to join, the membership fee is just £20 per year plus a £1 share in the first year.**  
**Members benefit from reduced prices over the bar and cheaper entrance for events.**

## HAPPY NEW YEAR FROM THE CLUB WHAT'S ON IN 2025!

**Saturday 1<sup>st</sup> February - Lode WI Quiz Night**

**Friday 28<sup>th</sup> February - Open Mic Night**  
Music by our talented locals. Entrance Free

**Saturday 8<sup>th</sup> March - Library Quiz Night**

**Saturday 15<sup>th</sup> March - Elvis Tribute Night**  
Entrance members £3, nonmembers £5

**Friday 28<sup>th</sup> March - Open Mic Night**  
Music by our talented locals. Entrance Free

**Saturday 29<sup>th</sup> March - 'Footlights' a quartet of Capella singers**  
Entrance £6 includes a Ploughman's Supper  
Tickets from the club

**Saturday 19<sup>th</sup> April - Children's disco and Easter Egg Hunt**

**Saturday 14<sup>th</sup> June - Our Annual Village Event**  
A day of music, magic & dancing.  
Catch up with friends in the café or at the BBQ.

Please refer to the website. [www.bottishamsocialclub.co.uk](http://www.bottishamsocialclub.co.uk) for the latest information. If you wish to be updated with the latest news, please email [bottishamesasc@gmail.com](mailto:bottishamesasc@gmail.com)  
31 Downing Close, Bottisham, Cambridge CB25 9DD Tel. 01223 812063

# 100% FULL FIBRE BROADBAND FOR BOTTISHAM

We've landed in your rural community to deliver a digital boost to homes and businesses.

Upgrade today  
0370 774 0514 or [gigaclear.com](http://gigaclear.com)

★ Trustpilot  
★★★★★ 4.7  
Rated 'Excellent'

**Gigaclear**  
Faster broadband for rural Britain

UP TO 15X FASTER THAN PART FIBRE  
UP TO 5X MORE RELIABLE THAN PART FIBRE

## Stitchshed Sewing

(Formerly Little Stitches)

### Repairs and Alterations

I am based locally and can help you with clothing alterations & repairs, curtains, blinds and cushions

### Sewing Classes

If you wish to learn to sew, then please call for a chat.

Classes at the Stitchshed or private home tuition available for:

- Dressmaking
- Patchwork and Quilting
- General craft sewing

Getting to know your sewing machine!

Tel: 01638 745160  
Mobile: 07762 004395  
Email: [stitchshed@gmail.com](mailto:stitchshed@gmail.com)  
Web: [www.stitchshed.blogspot.com](http://www.stitchshed.blogspot.com)

## Christopher THE LOCKSMITH

### ARE YOUR LOCKS BEHAVING BADLY?

We Value Old Fashioned Customer Service  
A Local Trusted Family Business Since 1989

- Specialist in UPVC & Wooden Doors
- No Call Out Charge
- No Fix No Fee
- All Work Fully Guaranteed
- 10% Senior Citizen Discount

For More Advice & Help Call Christopher:  
**07772 111 222**

[www.christopherthelocksmith.co.uk](http://www.christopherthelocksmith.co.uk)

## *Why Switch to Full Fibre Broadband?*

Do you bank or shop online? Have useful apps on your phone or keep in touch with loved ones on social media?

Perhaps you regularly stream entertainment such as Netflix or Disney+ on your TV, use digital technology to secure your home or make the most of money-saving smart gadgets?

Whichever way you currently use your broadband in rural Bottisham, the chances are your need for faster and more reliable broadband is only set to increase. That's because as the digital world expands, the less likely it is that your existing part fibre broadband will cope with the demands on it.

You see, the part fibre that you're likely on, is inherently slower and less reliable because fibre optic cables only go as far as a cabinet in your community, after which your broadband travels to your home along out-dated Victorian-era copper telephone wires. In contrast, Gigaclear's 100% full fibre is up to 15 times faster and five times more reliable because our fibre optic cables go direct to your property.

And for many of you reading this in Bottisham, you'll be pleased to learn our full fibre cables are already outside your property - so all you have to do is call our friendly Oxfordshire-based team to arrange an installation.

As for the reason you may want to switch? Well, it's likely you'll find you can enjoy your rocket-fast broadband for less money than you are currently paying!

And for anyone\* with a landline telephone, Gigaclear offers Home Phone, its digital phone service, with packages starting at only £5 per month – and no monthly line rental charges. And you can keep your existing telephone number!

Want to find out more? Visit [gigaclear.com](http://gigaclear.com) or call 0370 774 0514

\*Please note: we do not recommend you purchase home phone if you are reliant on your landline due to disability or accessibility requirements and do not have alternative means to contact emergency services in the event of a power outage.

---

## *News from Bottisham Medical Practice Patients' Participation Group*

---

**Practice Car Park:** Due to an increase in antisocial behaviour and activities in the Practice car park, it has become necessary to install a chain barrier at the entrance of the car park to stop vehicular access. If you are dropping off a repeat prescription, there is room to park and walk to the post box by the main door.

The chain barrier will be deployed after the last person leaves the premises.

*Thank you for your understanding.*

**Next Meeting Details:** To be decided. Details in next month's magazine. If you wish to join our meetings, please email our chairman [s.j.gilson@btinternet.com](mailto:s.j.gilson@btinternet.com). Or speak to reception.

## NAAFI Break

First Wednesday of every month from 10am to 11am,  
in the cafe at Anglesey Abbey  
Quy Road, Lode, Cambridge,  
Cambridgeshire, CB25 9EJ



Come along, for a good old chin wag, meet new faces and feel  
connected within your local community.  
Gary looks forward to welcoming you.  
He will be wearing a Help for Heroes T Shirt.



## FOUR SEASONS

PROFESSIONAL TREE SERVICES

Qualified & Professional Tree and Client Care

PRUNING | LOPPING | FELLING  
PLANTING | REDUCING & RESHAPING  
CROWN RAISING | HEDGETRIMMING  
THINNING | POLLARDING | STUMP REMOVAL  
OVERGROWN GARDENS PUT EACH IN SHAPE  
FRUIT TREES TREATED  
LOG & WOODCHIP SALES

FREE ESTIMATES & ADVICE  
WITH NO OBLIGATION

For quality jobs at a competitive price  
01353 721665 - Mob 07771 707921

All work carried out to BS 3998 Standard  
A genuine family business  
est. for over 30 years - Fully insured

The Name you can trust.

# Chiropody

## In your own home

**Save £5**  
off your first treatment  
when you present this advert.

Call **01638 814174** for an appointment

**Daniel Harris BSc Hons MChS**  
Fully qualified and Registered with Health Care Professions Council

## *Bottisham Bird Brain*

After our sortie into the fens for the Lapwing last month, let us return to the garden and consider a much smaller bird which usually arrives in family groups. They are so full of personality that it's hard to take your eyes of them, busy as they are!

The Long-tailed Tit (*Aegithalos caudatus*) is a bird mainly of gardens, parks and broad-leaved woodland, well – almost anywhere in the UK with trees, bushes and hedgerows – and has become increasingly comfortable with life in suburbia in recent times. Being small, Long-tailed Tits are susceptible to harsh weather conditions and their numbers fluctuate accordingly. But they are 'green listed' as being of 'least concern' both in the UK and globally. In fact, records show a 15% increase in the UK over the last 30 years, but the long-term trend may be exaggerated by a 'trough' in the population in the 1980s at the start of systematic counting. Recorded in the British Isles since Saxon times, the current population is estimated at a broadly stable 380,000 territories.



“Why territories?”, you ask. If you haven't encountered 'territory mapping' before, it is a time-economical method of counting various breeding birds, based on the fact that males sing to establish their territories, and a number of different species can often be counted in an area at the same time. Typically, around 10 visits per breeding season would be made to a mapped area to cover both early and late breeders, and each visit would span the hours from dawn to midday (when singing generally ceases). Territory mapping has a slight bias to under-estimate numbers of breeding pairs because paired males sometimes sing less than unpaired males. There can also be a difficulty with some species' polygamous behaviour! There are other counting methods, of course, suitable for different species and different habitats, but one can only go by the data publicly available!

Anyway, back to our bird of the moment... Like many of its relatives among the Titmice, the Long-tailed Tit is a charmingly intelligent and curious little bird. A few years ago, I answered the door to a friend, inviting him in, and behind him, a juvenile LTT flew boldly indoors and sat on the sideboard in my utility room! We stood there, sizing each other up for a few moments, before the bird allowed me to pick it up and settle it down on the branch of a bush in the garden.

You will rarely see a lone Long-tailed Tit; they tend to travel in family groups or, in winter, in mixed Tit flocks, traversing busily from tree to tree, picking grubs and insects off the leaves and twigs as they go. If you are lucky enough to see one sit still for a few moments, take a good look: it's a stunningly beautiful bird! 'Cuteness', obviously, is in the eye of the beholder but, with its roundish body and disproportionately long tail, the LTT sports a pleasing mix of pink and black feathers, contrasting with a whiteish face and breast.

*(Continued on page 21)*



# Hello neighbour

Bottisham's Co-op is open



**Find us here:**

12 High Street, Bottisham,  
Cambridge CB25 9DA

**Open 6.30am - 10pm, daily**



It's what we do

*(Continued from page 19)*

Long-tailed Tits' remarkable nesting habits are also worth examining. They pair monogamously for life and usually breed only once per year, with a typical clutch being between 8 and 12. Sadly there is a high failure rate – around 80% - but there is an upside...! A pair whose nest has failed will often go to help another pair to raise their chicks, resulting in a higher success rate from that nest than would otherwise be the case. Research shows that almost half of all LTT pairs enjoy the services of non-parent helpers – not only through neighbouring pairs but also through young birds sticking around until they pair off and become parents themselves. It has also been found that a pair, acting as helpers one year, have a better chance of rearing a healthy clutch of young the following year.

The nest, itself, is a true work of art. A pair will take up to three weeks to build a dome-shaped nest of mainly moss, lichen and animal hair, woven together with spiders' webs. This unique construction gives the nest not only a degree of camouflage, but also the flexibility to expand as the chicks grow. Once the structure is built, the birds then insulate it with a lining of up to 2,000 feathers, and they will even wait a few days before laying, to check the presence of predators in the area. What a shame that this prodigious effort so often transpires to be in vain!

Colloquial or folk names for the Long-tailed Tit (e.g. Huggenmuffin, Millithrum, Puddneypoke) are too numerous to list, but the beer drinkers among you might be familiar with the term 'bumbarrel', describing a small, squat barrel used in the brewing industry. Once people realised that the Long-tailed Tit's nest resembled the shape of this receptacle, it didn't take long for the bird to acquire the nickname 'Bumbarrel', often used by my favourite poet, John Clare, in his prolific exploration of the natural world:

“Bumbarrels twit on bush and tree, scarce bigger than a bumble bee,  
And in a white thorn's leafy rest, it builds its curious pudding-nest,  
Wi hole beside as if a mouse, had built the little barrel house.”

But Clare wasn't the only one captivated by these extraordinary, evocative little birds by any means...!

*TTFN - Gerry Daish*

I stopped to hear it clear,  
The sound of water tinkling near,  
Although I knew no dowsen could  
Turn hazel-fork in that beech-wood.

Then on the high tree-tops  
With rising runs and jerks and stops  
Like water stones break into bits  
Flowed the cascade of long-tailed tits.

The Long-tailed Tits by Andrew Young (Scottish Poet & Clergyman 1885 - 1971)

# MARTIN BALL

FIREWOOD & TIMBER

www.martinballfirewood.co.uk

sales@martinballfirewood.co.uk

Office • 01799 586 513  
 Woodyard • 01371 830 503  
 Mobile • 07980 258 003

Blunts Farm Yard  
 Thaxted  
 CM6 3PX



## LANDMARK INTERNATIONAL SCHOOL



A small international school in Fulbourn, South of Cambridge,  
**welcoming pupils aged from 4 to 16 years.**

We have experienced and enthusiastic teachers delivering a broad and engaging curriculum to small classes of pupils from Britain and beyond. We offer excellent pastoral care and are non-selective academically. Transport via school minibuses from central Cambridge and surrounding villages.

*To arrange a visit, please call:*

**Mary Greer on 01223 755100/07400 584015**

or email [mary.greer@landmarkinternationalschool.co.uk](mailto:mary.greer@landmarkinternationalschool.co.uk)

[www.landmarkinternationalschool.co.uk](http://www.landmarkinternationalschool.co.uk)

Landmark International School is a registered charity.

**PEACEFUL & PRAYERFUL art group**

at HOLY Trinity CHURCH BOTTISHAM

Age 12 + Up!

#love of All Faiths or none are  
**WELCOME**

No Art Experience Necessary  
 This is a Caring & Supportive Group - 'dropping-in' is fine!

**THURSDAYS** Please note:  
 10.20am to 12.30pm FEB. NO group on Thurs. 20th Feb.

Enjoy Art together  
 All Skill Levels Welcome  
 art materials supplied  
 Come with your own ideas OR use resources provided.





## **TAKE CHARGE AND BE SAFE**

Cambridgeshire Fire and Rescue Service has seen an increase in fires involving lithium-ion batteries over the last few years.

Many devices contain lithium-ion batteries. Mobile phones, laptops and games console controllers have these batteries, but so do cordless tools, garden machinery plus e-bikes and e-scooters. These batteries can heat up and cause a fire if not used correctly.

You can Take Charge and Be Safe by following a few simple tips:

- Charge batteries when you are awake and alert
- Only use the battery, charger and cables supplied by the manufacturer
- Before you go to bed, check anything still charging is switched off
- Do not overload sockets
- Do not charge e-bikes and e-scooters in escape routes.

Batteries can be a fire hazard if they are not disposed of properly. They should never be put in household rubbish or recycling bins.

During the processing of waste or recycling, a battery can be compacted and damaged, which can lead to ignition of the highly reactive lithium, leading to a fire starting.

Any kind of battery can cause a fire if not disposed of correctly and safely. This includes vapes or other e-cigarettes as well as standard batteries.

Fires involving batteries cause damage to refuse vehicles and roads, as well as significant delays to bin collections and road closures.

## **HOW TO DISPOSE OF BATTERIES**

There are many places to safely dispose of batteries. As well as local recycling centres, many shops around the county have collection bins in-store.

To find your nearest battery collection bin, visit either <https://www.recyclenow.com> or <https://www.recycleyourelectricals.org.uk> to check where your closest location is.

**HELP KEEP YOUR HOME AND FAMILY FIRE SAFE** – complete our online home safety check

You can carry out your own home fire safety check online by visiting the Cambridgeshire Fire and Rescue Service website.

The online home safety check helps you carry out your own fire risk assessment and is a simple way to help reduce risks and keep your home safe from fire. It takes you through some simple questions about you and your home, then provides an action plan that you can download and print. You can fill it in for yourself or a member of your family that might need help.

Visit [https://bit.ly/Home\\_Safety\\_Check](https://bit.ly/Home_Safety_Check) to find out more and start your online home safety check.



# DRAIN-PLUMB

*Plumbing, Heating & Drain  
Services*

## BLOCKED DRAINS CLEARED

- Gas Boiler Service & Maintenance
- Power Flushing of Boilers & Heating Systems
- Home Buyers CCTV Drain & Plumbing Surveys
- All Plumbing & Heating Repairs/Alterations
- All work Guaranteed

TEL: 01638 742873  
MOB: 07932 773515

7 NESS ROAD,  
BURWELL  
CAMBRIDGE, CB25 0AA

## TV AERIALS

## SATELLITE

## DIGITAL FREEVIEW

Installations  
Extra points etc.  
Tuning in of TVs, Digiboxes etc.

Experienced local engineer  
**RICHARD FORTEY**  
**01638 662119**

No Call Out Charge

## *Public Transport Matters*

At last there is more news about the planned new T4 and T5 bus routes which will replace the 11 (Newmarket – Burwell – Cambridge) and also provide a new link between the Swaffhams, Lode, Bottisham, the Wilbrahams, Fulbourn, the Cambridge 6th Form Colleges and Addenbrookes Hospital, as reported in ‘Public Transport Matters’ last Autumn. (The existing bus service 12 between Newmarket and Cambridge, via Bottisham, is unaffected by these new routes and will continue).

The tender process to run T4 and T5 was carried out at the end of last year by CPCA (Cambridgeshire and Peterborough Combined Authority) and the winning bus operator was decided. However, prior to contract finalisation the winning operator raised some issues of clarification with CPCA. At the same time its underlying cost base had to be recalculated because of the increase in employers’ National Insurance contributions that was announced in the Autumn budget, so it enquired about the possibility of raising its tender prices. (There’s been a bit of dispute about what actually happened at the end of the tender process: this was reported on in the Cambridge Independent recently).

The result of all this was that CPCA decided to re-run the tender process. At the moment it appears that CPCA expects the bus services to start in May. But of course nothing is fixed until contracts are signed and the new bus services have gone through the necessary legal process of being registered with the East of England Traffic Commissioners. The AtoB1102 Group, which has played a major role in providing the demand evidence base for these new bus services and in lobbying for them, will publicise and give details of the new T4 and T5 as soon as CPCA provides it with public information that can be shared.

Meanwhile, a new type of ‘flexible’ midibus service has just started (on the 11th of January) in the part of East Cambridgeshire around Soham, Ely and Little Downham: it’s called ‘TIGER-on-Demand 6’. Over the last 2 years the Government’s Department of Transport has been funding trials of such Digital Demand Responsive Transport (DDRT) midibus services across rural parts of England, and now they have come to this part of the CPCA’s area (though not to the Swaffhams, Lode or Bottisham). The way they work is that the midibuses run within a set time period (in TIGER-on-Demand’s case it’s 06:30 to 19:00 Monday to Saturday) and operate over a defined area, and they are booked via a smartphone app. The app has a map on it to show the area where the DDRT service runs. To use the service, you first have to register online, and then book your journey. When you make a journey booking via the app the software will choose stops, a route and a time nearest to what you specify within the constraints both of vehicle availability and of the other journey requests it has from other passengers. So, it is possible that the journey that’s provided by the service might actually be some time away from your preferred time and might involve a walk at one or both ends of your journey! To find out more, download the TIGER-on-Demand app on your smartphone or go to [www.tigerondemand.co.uk](http://www.tigerondemand.co.uk).

**National Traveline Enquiries (for bus services) - [www.traveline.info](http://www.traveline.info) or 0871 200 22 33 (a Premium-rate service).**

**National Rail Enquiries - [www.nationalrail.co.uk](http://www.nationalrail.co.uk) or 03457 48 49 50**

*Happy travelling, John Austin*

# M&P

## LANDSCAPE AND DESIGN

Patios, Block Paving, Fencing,  
Turving and all Gardening needs.

References available on request.

Local tradesman • Free estimates

PLEASE CALL

**01223 811144**

MOB **07837 358550**

## N & G Marsh of Burwell

Specialising in bespoke metalwork  
and engineering

- ❖ Welding services
- ❖ Handrails
- ❖ Gates
- ❖ Metal railings
- ❖ Tow Bars
- ❖ Mower repairs
- ❖ RSJs supplies

Services to Building  
and Agricultural Industries

Brian Marsh Engineer

Tel. 01638 741354 Mob. 07519 493664

E: [Bookings@themeadowhouse.co.uk](mailto:Bookings@themeadowhouse.co.uk)

W: [www.n-g-marsh.co.uk](http://www.n-g-marsh.co.uk)

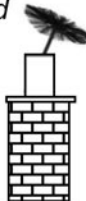
Unit 12, Meadow Ind. Estate  
Reach Rd., Burwell, CB25 0GH

## **R. BRISTLEY** Est. 1974

9 Collings. Place Newmarket CB8 0EX

### **BRUSH ELECTRIC SWEEP**

- All Chimneys swept
- Solid Fuel, Oil and Gas
- Cows, Nets and Pots fitted
- Carpets Cleaned
- Stoves Serviced
- Competitive Prices
- Very Clean
- Public Liability Insurance



also Classic Wedding Car Hire  
White Citroen DS21

Tel: 01638 662439  
[www.rbristley.co.uk](http://www.rbristley.co.uk)

## **BED AND BREAKFAST**

### **THE MEADOW HOUSE**

2A High Street, Burwell,  
Cambridge. CB25 0HB



- En-suite rooms with colour TV.
  - Large car park and grounds.
  - Family rooms, children welcome.
  - English Tourist Board 4 Diamonds.
- Self catering cottage also available  
at Swaffham Prior.*

Brian & Hilary Marsh

Tel: 01638 741926 Mobile: 07519 493664

Email: [Bookings@themeadowhouse.co.uk](mailto:Bookings@themeadowhouse.co.uk)

Website: [www.themeadowhouse.co.uk](http://www.themeadowhouse.co.uk)

## *Highways and Byways: Travelling and Parking Near Road Junctions*

A common problem that drivers and cyclists face is that of vehicles being parked too near road junctions. The Highway Code refers to the law against dangerous and obstructive parking and then states: DO NOT park opposite or within ten metres of a junction, except in an authorised parking space. Also, DO NOT park on a bend. Road users are also advised not to overtake near a junction or on a bend.

It is not clear exactly where these ten metres to keep clear should be. The rounded corners are technically part of junctions themselves because vehicles enter and leave the roads at their ends. Corners may just curve around a pavement outside a property or may encompass a wide grass verge.

Clearly, no part of a vehicle should be parked on a curved corner itself, if only to provide enough space for long vehicles to turn in and out. Cyclists and drivers will not have a clear view until they have fully turned the corner. Spaces beyond are needed to see ahead and be seen. They should not be forced to overtake parked cars near a junction and face cars turning in and out.

Consequently, no car should be parked until it is at least ten metres beyond the end of a corner curve. It should also not be parked opposite the junction and its corner curves, and for another ten metres either side. These ten metres to keep clear are also required in the regulation about parking after dark.

The Police may put a Fixed Penalty Notice on any vehicle they judge to be likely to cause a danger or unnecessary obstruction. Those who do not park in accordance with the Highway Code may be held at least partially responsible for an accident. Long vehicles might scrape cars. Insurance claims may be problematic.

The junction between Lode Road and Tunbridge Lane often has cars parked too near and opposite it and lacks double yellow lines. However, it is possible to avoid cars parked or manoeuvring on any of the outside lanes of the Triangle. This can be achieved by going anticlockwise around the other two clear inside lanes. Parking in the lay-by outside the shops is now time limited. When the Police attend to check, a car may also get a ticket for not being parked fully in it, double-parked or partly overlapping it. Also, for being parked on a double yellow line, or opposite or near a junction.

*Robert Stevens*

---

Copy deadline for next issue is 14 February.

Please send material to the editor at  
[BottishamCresset@gmail.com](mailto:BottishamCresset@gmail.com)



Have you ever stopped of a morning to sit down to have a cup of coffee in the house on your own, and thought it would be nice to talk to somebody?  
Well you can and very easily too. Come along to Meeting point on a Wednesday and have that cup of coffee with like-minded company



**in the Poppy Room at the  
Bottisham Community Sports  
and Social Club**

A place where you can meet old friends  
make new friends, relax, chat and enjoy  
coffee, cake and biscuits in a friendly  
relaxed atmosphere.

**EVERYONE WELCOME**

**ADMISSION FREE**

**PREMIER INVESTMENT MANAGEMENT SERVICES LTD**

INDEPENDENT INVESTMENT ADVISERS Authorised &  
Regulated by the Financial Conducts Authority

Specialist in Isa's & Isa Transfer's  
Investment Planning & Portfolio Management

To arrange a free consultation ring **01223-882422** or email  
**pims@globalnet.co.uk** or visit **www.pims-uk.com**

**L BOTTISHAM**

**SCHOOL OF MOTORING**

**Tel: 811556**

*All qualified instructors  
with extremely high  
1st time pass rates*

## ***Bottisham Adult Learning Association (BALA)***

**The current course on THE COLD WAR** presented by Richard Gibbons will finish on 13th February with a break for half term.

Unfortunately, the tutor we had arranged for a course after half term has withdrawn. However, it's still hoped a course can be arranged from 27th February until 27th March. If we are successful the details will be in the March magazine.

A 4-week course on ASTRONOMY presented by Jonathan Clough has been arranged for early summer. Details to follow nearer the time.

Any enquiries to [Bottishambala@btinternet.com](mailto:Bottishambala@btinternet.com)

*Helen Cole*



## ***Bottisham Airfield Museum Group (BAMG)***

As we start the countdown to the new season at the museum starting Sunday 6th April 2025, some of you may be interested in booking this year's first Falconry experience event on Sunday 6th April. There are two sessions available, one morning and the other afternoon. Each session is three hours long where you can get up close to a variety of birds of prey, learn all about them and watch them fly. Booking can be made via [www.adventure001.com](http://www.adventure001.com).

Please note that only those persons who have booked a place will be allowed onto the Falconry area that will be roped off from the rest of the museum.

The museum has some new exhibits this year that are housed in a newly opened gallery in the main museum building. A lot of work has been carried out in the café to give it more of an authentic 1940s look, and we plan to replace the metal gates at the entrance with wooden ones to further the look of a 1940s RAF Airfield. We are planning one or two extra events this year that are still at the planning stage - more details next month!

If you have time on your hands and you are interested in volunteering in the Museum or the café, please get in touch via the 'contact us' section on our website; [www.bottishamairfieldmuseum.org.uk](http://www.bottishamairfieldmuseum.org.uk).

*Charles Cook Museum Volunteer*

**Copy deadline for next issue is 14 February.**

*Please send material to the editor  
at [BottishamCresset@gmail.com](mailto:BottishamCresset@gmail.com)*



## Simple, Safe and Secure

Self Storage for your Business or Home

No Long Term Commitment

Personalised entry with unique key fob and Extensive 24hr CCTV  
Convenient vehicle access to all units for easy loading and unloading.



Please call 01223 901 021 or email us at [admin@camstorage.co.uk](mailto:admin@camstorage.co.uk)  
[www.camstorage.co.uk](http://www.camstorage.co.uk)



01638 428 060

01223 832 928

[www.Rothwells.biz](http://www.Rothwells.biz)

## Carpet Cleaning

### Stone Floor, Upholstery & Rug Cleaning.

*A few points that make us stand out from the others,*

Rothwell's has been in business since 1993.

We're an honest local family firm.

Our large truck mounted machines mean more cleaning  
& drying power for the best results possible.

Members of both the NCCA and TACCA.

We will move the furniture for a thorough clean.

100% satisfaction or it's FREE.

*Call Oliver and Max Campbell for expert help today.*

Rothwell's, Malting End, Kirtling, Newmarket, CB8 9HH



Our next meeting will be on **Tuesday 18th February at 7.30pm** when **Angela Stewart** will be talking to us about **Cambridge Women's Refuge**.

Over the coming months we have a full programme of talks and activities planned – ranging widely across culture, literature, history, gardening and travel – so there should be something for everyone. If you're interested in joining or you'd like to know more about our activities then please get in touch or come to one of our regular meetings. All are welcome.

We usually meet on the third Tuesday of every month at the Bottisham Community Sports and Social Club at 7.30pm. Talks are followed by refreshments offering the opportunity to meet and chat to others. We also have a number of smaller groups which meet at other times during the month to pursue a variety of cultural activities and support local charities.

*Jennifer Clark*

# Newmarket Community Cinema

The Stable, High Street, Newmarket.



**February 17th: Scrapper (12)**

**March 17th: One Life (12)**

Doors open at 6.30pm with the film starting at 7.30pm. Admission is £6 which includes free refreshments. If you would like to reserve seats, please email [richardjbowler@outlook.com](mailto:richardjbowler@outlook.com) or phone 01638 666810.

## OvenPad Cleaning Services

I will professionally & efficiently clean ovens, ranges, Agas, ceramic hobs, extractors, microwaves and BBQs.

**It's a dirty job, why not give me a call?**

Contact **Paddy Kelly** on  
Tel: 01638 742703  
Mob: 07752 631343  
Email: [info@ovenpad.com](mailto:info@ovenpad.com)  
Website: [www.ovenpad.com](http://www.ovenpad.com)

## ANDREW EVANS

01954 780 999 – 01223 864335

email: [andrew@omegaclean.co.uk](mailto:andrew@omegaclean.co.uk)  
[www.omegaclean.co.uk](http://www.omegaclean.co.uk)

- ✓ Carpet Cleaning
- ✓ Upholstery Cleaning
- ✓ Tile & Grout Cleaning
- ✓ Leather Cleaning
- ✓ Oriental Rug Cleaning
- ✓ Carpet & Fabric Protection
- ✓ Allergy Relief Treatment
- ✓ Odour Eradication
- ✓ Stain Removal
- ✓ Carpet Fitting

Family Business Since 1980



# PEST PROBLEM?

CALL DRE PEST CONTROL

01954 230708

07789 502556

- Commercial & Residential
- One - off Call Outs
- Management Contracts

Cambridge & surrounding areas  
[www.drepestcontrol.co.uk](http://www.drepestcontrol.co.uk)



## ***Bottisham and District Gardening Club***

With the weather so cruel at this time of year there seemed little point in dwelling on what we couldn't do in the garden. So, for our January meeting Denis (Digger) Moules entertained us with Part II of his stories of the Fen Boy who became a Cambridge Detective.

In February we will return to horticultural topics when Nigel Start will enlighten us on the Poisonous Plants in our Gardens. Anyone who has visited the Poison Garden at Alnwick Garden, where there are around 100 plants behind locked gates, will know that there are many surprises in store.

Please join us in the Poppy Room at the Bottisham Community Sports and Social Club on the 25th February when our meeting will start at 7.30 p.m. and all will be revealed. Visitors are very welcome for a small charge.

*Margret Coles*



## ***Anglesey Group Mothers' Union***

Our meeting on 12th December 2024. Members spent a productive afternoon making Christmas table decorations in small containers using holly, ivy, evergreen cuttings, pinecones and some seasonal flowers. The activity was very therapeutic and greatly enjoyed by all – and we had something festive to take home at the end.

Refreshments also had a seasonal theme, with finger sandwiches, mince pies, shortbread and congress tarts to accompany the usual cups of tea and coffee. A fine afternoon for companionship, if the chatter and laughter was anything to go by!

Our next meeting is on Thursday 20th February at 2.30pm at the Fassage Hall, Lode, where our speaker Simon Gale will be talking about 'Supporting an African Community'. You are warmly welcome to join us.

**Theme for 2025: 'Join Us and Join In'.**

*Alison Martin*

## **QUIZ NIGHT**



**Saturday 1st February 2025 - 7.00 for 7.30pm,  
At Bottisham Community Sports & Social Club**

£10 per person to include a Ploughman's Supper - Teams of six per table

**To book contact Sue Kempster on 812194  
or email [suekempster19@gmail.com](mailto:suekempster19@gmail.com)**

Hosted by Lode WI

# Tutor



Experienced tutor:  
Fully qualified former primary school  
teacher and home educator based in  
Little Wilbraham

Expertise in:  
Primary  
Key Stage 3: Maths, English,  
History & Geography  
Study skills & revision techniques

For information and to arrange a free  
meeting/consultation contact:

Anne-Marie McCubbin BA(Hons) PGCE  
email: [info@wingstoflyeducation.co.uk](mailto:info@wingstoflyeducation.co.uk)  
tel: 01223 811939

# BURWELL COMPUTERS

SUPPORT • SALES • REPAIRS

☎ 01638 505930

☎ 07901 556895

[support@burwellcomputers.co.uk](mailto:support@burwellcomputers.co.uk)  
[www.burwellcomputers.co.uk](http://www.burwellcomputers.co.uk)



An accountancy  
service that covers  
everything your  
business needs

For more details contact Paul on

✉ [info@cb25accounting.co.uk](mailto:info@cb25accounting.co.uk)

☎ 07803 782423     [cb25accounting](https://www.facebook.com/cb25accounting)



Sales, servicing, repairs and sharpening  
of all types of garden machinery.

Collection and delivery available.

Friendly, local and professional service.



C.W.KIRK LAWNMOWERS

01638 744 349

[CWKIRKLAWNMOVERS.CO.UK](http://CWKIRKLAWNMOVERS.CO.UK)

44 NEWMARKET ROAD BURWELL CAMBRIDGESHIRE CB25 0AE



# Village Litter Picks 2025

Fresh air, friendship and  
looking after our wildlife

*Bring your gloves and join us for refreshments afterwards*

Starting Location	Date	Month
Queens Court Care Home	8	February
Bottisham Community, Sports & Social	8	March
Bottisham Village College (sports centre car park end)	12	April
Queens Court Care Home	10	May
Bottisham Community, Sports & Social	7	June
Bottisham Village College (sports centre car park end)	12	July

Further Information:

All events, once a month on a Saturday, starting at 10:00am

Ways to keep in touch with updates:

- ✓ Join the [Bottisham Village Litter Pick WhatsApp Group](#)
- ✓ Visit either the [Bottisham Events Facebook Page](#)
- ✓ Visit the [Bottisham Community Group Facebook Page](#)

## Bob Newman & Sons

*Piano Tuner*

Experts in all aspects of piano tuning,  
restoration and repair work



Please contact us to discuss your requirements

Mobile: 07736 411066 (Bob)

07786 988175 (Matt)

Email: bob@bobnewmanandsons.co.uk

Web: bobnewmanandsons.co.uk  
(online booking for tunings available)

## Derren Heath Electrical

Napit registered electrician based in Bottisham  
All domestic and commercial electrical work undertaken.

Rewires, new builds and extensions.

New sockets.

New lighting.

Electrical safety condition reports.

Fault finding.

Electric vehicle charging points.

Replacing old fuse boxes.

Free quotes.

Tel: 07788911892

Email: dhelectrical@hotmail.co.uk

Bottisham, Cambridge, Cambridgeshire.



## FLOOR COVERINGS

Cambridgeshire's largest flooring  
showroom est. 1996

FREE no obligation quotes.

01223 233233

[www.floor-coverings.net](http://www.floor-coverings.net)



Unit 31-32 Dry Drayton Industries, Scotland Road,  
Dry Drayton, Cambridge CB23 8AT  
Open: Mon - Sat 9-5

## S. NEAL *Carpentry and Small Works*

Offering a high quality  
carpentry and small works  
service in Bottisham and  
the surrounding area.

FLOORING • HANGING NEW DOORS  
KITCHEN RENOVATIONS • DECORATING •  
TILING • LANDSCAPING  
BESPOKE CARPENTRY



07703 043243

SNealCarpentry@Gmail.com  
@S.Nealcarpentry

### Snowdrop Season at Anglesey Abbey



Anglesey Abbey is famous for its snowdrop collection and the gardens are home to over 500 different varieties of snowdrop now. Throughout February, you can see thousands of delicate snowdrops along the woodland paths, Jubilee Avenue and in among the daffodils and hellebores in the Winter Garden.

You can also join an exclusive **Specialist Collection snowdrop tour** – a chance to see some of the snowdrops that are not usually visible to the public and hear about the intriguing stories behind how there came to be such a vast collection at Anglesey Abbey. Head to our website for more information and to plan your visit.

If you're visiting us in **February half-term**, you can pick up a nature spotter-sheet, enjoy an adventure in the Woodland Play Area, build a den and walk among the beautiful snowdrops throughout the grounds. The House at Anglesey Abbey will also be open in February – you can enjoy exploring the ground floor from 11am to 3.30pm daily or join a tour to see the upstairs of the house and some conservation in action on Mondays, Wednesdays and Fridays.

#### Looking for even more fun?

We are excited to host Wild in Art's Find the Flock trail at Anglesey Abbey from 1 March to 27 April 2025. Pick up a trail map and embark on a journey around the gardens at Anglesey Abbey in search of twelve ewe-niquely designed **Shaun the Sheep** sculptures.



Each super-sized sculpture, standing tall at 160cm, will be displayed at iconic locations around the estate and each one has been painted with bright colours and funky, bold patterns. Find the Flock is put on in collaboration with Wild in Art and Aardman animations and, just like the recent Bear Hunt trail, is set to delight both children and adults alike.

[www.nationaltrust.org.uk/anglesey-abbey](http://www.nationaltrust.org.uk/anglesey-abbey)

# Bottisham Vehicle Services Ltd

Reliable, Friendly, Professional

Service and repairs to all makes,  
MOT testing, tyres, air conditioning  
Courtesy car available  
Local collection and delivery

10 Tunbridge Lane, Bottisham, Cambridge CB25 9DU  
01223 811919 • [simon@bvsltd.net](mailto:simon@bvsltd.net) • [www.bvsltd.net](http://www.bvsltd.net)

## WANTED

**ALL TYPES OF ANTIQUES, CURIOS & COLLECTABLES  
POLITE, LOCAL BUSINESS EST. OVER 25 YEARS  
IS LOOKING TO BUY THE FOLLOWING:**

- Old watches, clocks, scientific instruments ● Quality jewellery, costume jewellery, even items in need of repair ● Silver, silver plate, old copper & brass ● Glass, ceramics, china ● Militaria, weapons, medals, badges, uniforms, paperwork & photos ● Tribal art – masks, weapons ● Walking canes, sword sticks ● Sporting memorabilia ● Old toys, games and train sets ● Vinyl albums and singles ● Woodworking tools ● Furniture – antique up to 1970s

**Anything considered – give me a call before you throw it away  
POLITE & CONFIDENTIAL SERVICE. GOOD PRICES PAID.**

**STEVE DURRANT 01638 507037 OR 07740 591194**

**Email: [svdservices51@gmail.com](mailto:svdservices51@gmail.com)**



## WHAT OR WHO IS MISSING?



Hello! I think I stood behind you in the Co-op? or was it buying Chips? Perhaps it was at the local Garage or collecting our children from School or simply seeing you across the street. I may have met you at my door with a whole group of children on Halloween's Trick or Treat or was it that splendid School Carol Service in our amazing historic church?

It has famously been said that the Church is the only organization that exists for its non-members. Clever, but I am not an organization. I am a Vicar who has spent most of my life trying to help people understand that Christian faith is other than old buildings, old hymns, old religion, and old people. The Christians I know are

warm, good humoured, emotionally intelligent, and basically kind. They struggle with the cost of living, raising children, caring for elders, making sense of life. Ordinary people with an extraordinary belief and trust that knowing God in Jesus Christ makes a difference. At Holy Trinity UR Welcome! I may have just described part of your life experience. The people that worship with us are made up of all ages from all walks of life. They come with their own anxieties, doubts, and fears and yet there is something quite heartwarming about their willingness to walk their journey of faith together. These days Sundays include shopping, car-boot sales, children's sports/dance clubs or just recovering from an exhausting weekly schedule. May I respectfully encourage you to make time for that inner-voice where you just might hear an invitation from the God who has made all things bright and beautiful to know him better. We at Holy Trinity believe that knowing Jesus Christ makes a difference and brings a greater joy in sharing our friendship and faith together. Somebody recently asked "Vicar, what is your vision for the future?" It is simply this. To follow Christ and build a joyful church where all people feel welcome, known and loved on your doorstep, sharing the love of God for the sake of every home and our flourishing local community. "Come and join us!"

*Reverend Canon Max Osborne*

# ANGLIA TREE CARE

**LARGE ENOUGH TO COPE • SMALL ENOUGH TO CARE**

80% OF OUR WORK IS VIA RECOMMENDATIONS  
TREE SURGERY & FELLING • HEDGE MAINTENANCE  
STUMP GRINDING • FULLY QUALIFIED  
FULLY INSURED • 24/7 SERVICE  
All work carried out to BS 3998

**Free Estimates Given within 7 days**

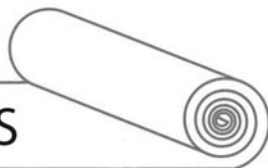


Tel. 01223 424454 • [INFO@ANGLIATREECARE.CO.UK](mailto:INFO@ANGLIATREECARE.CO.UK)

**M E M B E R**  
Guild of Master Craftsmen

## PETER FISHER

CARPETS - WOODS - VINYL



A wide range of floorings supplied and fitted.  
Please call for a free estimate and select in your home.

Tel: (Bottisham) **01223 811321**  
Mobile: **07879 494 685**

*Great service for*  
**30** years



# J&J DRAKE



## Fully approved electrical contractor

- All Work Certificated in Accordance with NICEIC
- Free no obligation quotations
- All aspects of electrical work undertaken such as re-wires, Periodic test and inspections, maintenance calls, New build Installations.
- However small you may consider your job it will be treated with the same attention to detail as every one of our jobs.

## Your Local Electrician

Unit 24, Hall Barn Road Industrial Estate, Isleham, Ely, Cambs. CB7 5RJ  
 Contact us on: 01638 781567 / enquiries@jandjdrake.co.uk



## N.C.S.

**BRUSH ELECTRIC SWEEP  
 ALL CHIMNEYS SWEPT**

- BIRDS NESTS REMOVED
- OIL & GAS BOILERS
- SOLID FUEL, STOVES FITTED
- SMOKE PRESSURE TESTING
- INSECT MESH, POTS, COWLS
- FLUE LINERS SUPPLIED & FITTED
- BIRD GUARDS & TERMINAL FITTED
- GUTTERS CLEANED & REPAIRED
- GENERAL PLUMBING WORK

**FOR FREE QUOTE CALL  
 07824 727277 or 01638 662760**

EMAIL  
**NCS.NEWMARKET@YAHOO.CO.UK**  
 WEBSITE  
**www.ncsnewmarket.co.uk**

\*Send text or e-mail for 10% discount  
 Answers within an hour. • Waiting time approx. 1-2 weeks

**VERY CLEAN • Public liability insurance  
 - Competitive rates -**

*The Lake District - Eden vale*



## HOLIDAY COTTAGE

Nr. Penrith Cumbria CA10 1QW  
 AVAILABLE ALL YEAR ROUND

Immaculate and well-equipped modern holiday house, sleeps six, full central heating, double glazing and double garage.

Our holiday home offers every comfort, a real 'home from home' at reasonable rates, in a lovely village location with panoramic views.

**T: 01638 741926 or 741354  
 M: 07519 493664  
 for details**

All weeks £325.00

## DB Electrical & Building Services

Dale Badcock  
07718 122538

dbelectricalandbuilding@gmail.com

All domestic work undertaken

- Rewiring
- Lighting
- Burglar alarms
- Security Lighting
- Lighting design
- Controls specialist
- Renovations
- Alterations
- Kitchens & Bathrooms

91 Northfield Park  
Soham  
CB7 5XA

01353 720570

[www.DBElectricalandbuilding.co.uk](http://www.DBElectricalandbuilding.co.uk)



*Rebecca Golding*  
*now has her new salon*  
*in Burwell*

*Tues*  
*9.30am-8pm*

*Thurs*  
*9.30am-8pm*



*30 Years'*  
*Experience*  
*All aspects of*  
*Hairdressing*

*Tel. 07742 997474*

*Free Parking at*  
*67 Silver Street*  
*Burwell, CB25 0EF*



## **TIM PHILLIPS & Co. Accountants**

Independent, specialist service for:  
**Small Business • Self Assessment  
Personal Taxation**

Free initial consultation – no obligation  
**EASY, FREE PARKING**

Copley Hill Business Park, Cambridge Rd., Babraham  
Off A1307 between Wandlebury and Babraham

**Tel: 01223 830044. [www.tpaccounts.co.uk](http://www.tpaccounts.co.uk)**

# ARCHITECTURAL DRAWINGS

FOR

PLANNING & BUILDING REGULATION APPLICATIONS

NEW PROPERTIES, EXTENSIONS, LOFT CONVERSIONS ETC

CONTACT US now to arrange a FREE on-site meeting at your convenience to discuss your project.

## ELY DESIGN GROUP

*'Architecture by Professionals'*

[www.elydesigngroup.co.uk](http://www.elydesigngroup.co.uk)

01353 649649

[mail@elydesigngroup.co.uk](mailto:mail@elydesigngroup.co.uk)

## STEPWISE FOOTCARE



### *Clinic-based Podiatry*

ALONGSIDE GENERAL FOOTCARE WE OFFER A RANGE OF SPECIALIST TREATMENTS INCLUDING:

- *Children's foot problems*
- **Lunula Laser™** fungal nail treatment
- **Swift Microwave** for verrucas
- *Biomechanical assessments*
- **MotionMetrix** gait and running analysis
- **SIDAS** bespoke orthotic insoles
- *Diabetic foot care*
- *Nail and minor skin surgery*
- **Wilde-Pedique** toenail reconstruction

**Tel: 01638 741973**

HCPC Registered | RCoP Accredited Practice  
[stepwise-footcare.co.uk](http://stepwise-footcare.co.uk)

Unit 1, 10 Ness Road, Burwell, Cambridge CB25 0AA

## The Upholstery Barn



■ Fulbourn-based upholsterer offering traditional and modern reupholstery, repairs and re-covers

■ Bespoke Curtains, Roman blinds and soft furnishings

### Contact:

Anne McGarvey

T: 07986027807

E: [camupholsterybarn@outlook.com](mailto:camupholsterybarn@outlook.com)

[www.theupholsterybarn.co.uk](http://www.theupholsterybarn.co.uk)



# **My Village Handyman Services Ltd**

- DIY Repairs & Odd Jobs
- Painting & Decorating
- Tiling & Flooring
- Gardening & Landscaping
- Patios & Decking
- Fencing, Sheds + Garden Studios
- Kitchen & Bathroom Installation
- Gutter Clear and Jet Washing
- Leaking Taps & Plumbing Jobs
- Carpentry & Repairs
- Light Fittings, Sockets & Electrical Works
- Studio & Summer House Builds
- Brickwork & Small Builds
- New Doors or Locks
- Security & Garden Lighting



**If your job is not listed, get in touch I'm sure we can help**  
Free no obligation quotes and advice provided  
Your very local Handyman

Contact us to arrange a visit or quote

Call: **07500876376** or **01223 881700**

Email: [info@myvillagehandyman.com](mailto:info@myvillagehandyman.com) Web: [myvillagehandyman.com](http://myvillagehandyman.com)

# K.J.P.

## Building/Maintenance



Including:

Design, landscapes, patios, fencing,  
gardening, decking, painting,  
decorating, tiling, all interior work,  
etc.

Tel: 01223 812021 or  
mobile 07799 504043



## SANICLEAN

DRAIN & PLUMBING SERVICES

**R. BRISTLEY** Est. 1974

9 Collings Place, Newmarket

- *Drains Unblocked Fast*
- *Toilets, Baths and Sinks*
- *Guttering and Downpipes*
- *Drain repairs and CCTV Surveys*
- *High Pressure Water Jetting*
- *Domestic and industrial*
- *All Work Guaranteed*

Newmarket (01638) 662439

Mobile 07970 038404

[www.rbristley.co.uk](http://www.rbristley.co.uk)



# AMS (EA) Ltd

## Driveways, Landscaping & Plant Hire

*Our areas of expertise include:*

- All Driveways & Block Paving • Driveways Cleaning & Sealing**
- **Patios & Paths • Fencing • Drainage • Turfing & Seeding**
  - **Artificial Grass • Site & Garden Clearance (Licenced)**
  - **Grab Hire & Plant Hire • All Aggregates Delivered**

All paving work comes with a **5yr min Guarantee**

Call for **FREE** estimates and bookings:

Please visit our websites for examples of our work & refs:

Office: 01638 721893 or Site: 07789 261266

Newmarket, Cambridge and Ely

[amsdriveways.co.uk](http://amsdriveways.co.uk)



**BRADSTONE**  
Assured

**BrettApproved**  
PAYING EXPERTS YOU CAN TRUST



[amsaggregates.co.uk](http://amsaggregates.co.uk)

[www.amsealtd.com](http://www.amsealtd.com)

# *'Your Friendly, Local Wood Burning Stove Specialist'*



## VISIT OUR SHOWROOM!

Whitelands Farm  
Newmarket Road  
Bottisham  
Cambridge  
CB25 9BD

*Monday – Closed*

*Tuesday – Closed*

*Wednesday – Closed*

*Thursday – 12.30 – 3.00pm*

*Friday - Closed*


*Saturday – 1.30 – 3.30pm\**

*Sunday – Closed*

*(\*Open 1<sup>st</sup> and 3<sup>rd</sup> Sat of the month only, Sept to April)*

Please phone to check for closure during school holidays

Email & telephone enquiries dealt with Monday – Friday 9am – 5pm

 01223 703184

Email: [sarah@cambridgestoves.co.uk](mailto:sarah@cambridgestoves.co.uk)

CALL NOW FOR YOUR FREE, NO OBLIGATION SURVEY AND QUOTATION, OR MAKE AN APPOINTMENT TO VISIT OUR SHOWROOM

ALL ASPECTS OF BUILDING WORKS TO YOUR FIREPLACE UNDERTAKEN

FAST, RELIABLE AND EFFICIENT SERVICE CARRIED OUT BY QUALIFIED HETAS ENGINEERS

LARGE SELECTION OF WOOD BURNING STOVES ON DISPLAY

NOW SELLING SEASONED FIREWOOD!!





**BOTTISHAM COMMUNITY  
LIBRARY ASSOCIATION**

**LIBRARY OPENING HOURS**

TUESDAYS

3.00-5.00 and 6.00-8.00

WEDNESDAYS

10.00-11.30

THURSDAYS

3.00-5.00

FRIDAYS

6.00-8.00

SATURDAYS

10.00-12.00am

*Working in Partnership with the  
County Library Service.*



**Need a little extra  
Financial Help?**

**We don't have a magic money  
tree, but we may be able to help!**

**BOTTISHAM LOCAL CHARITIES**

**\*Bottisham Local Charities can offer  
support to people with a minimum of  
two years residence in the village**

**For further information or an  
application form contact the Clerk:  
bottishamlocalcharities@gmail.com**

**01223 813774 or 0792 042 5154**

**BOTTISHAM PARISH COUNCIL**

**CHAIR - JON OGBORN** \_\_\_\_\_ jon.ogborn@bottisham-pc.gov.uk

**VICE CHAIR NADENE CUNDELL** \_\_\_\_\_ nadene.cundell@bottisham-pc.gov.uk

**PARISH COUNCILLORS**

MARK OVERTON \_\_\_\_\_ mark.overton@bottisham-pc.gov.uk

STEVEN O'DELL \_\_\_\_\_ steven.odell@bottisham-pc.gov.uk

CAMELIA MIHAESCU \_\_\_\_\_ camelia.mihaescu@bottisham-pc.gov.uk

JAWAHAR SWAMINATHAN \_\_\_\_\_ jawahar.swaminathan@bottisham-pc.gov.uk

JOHN AUSTIN \_\_\_\_\_ John.Austin@Bottisham-pc.gov.uk

SAVANNAH LAURENT \_\_\_\_\_ savannah.laurent@bottisham-pc.gov.uk

MARIA SOCEA \_\_\_\_\_ maria.socea@bottisham-pc.gov.uk

REHANA SHAKER \_\_\_\_\_ rehana.shaker@bottisham-pc.gov.uk

KEITH MORRISON \_\_\_\_\_ keith.morrison@bottisham-pc.gov.uk

PARISH CLERK SAM CHAMBERS-TURNER - 41 Stow Road, Quy, CB25 9AD  
\_\_\_\_\_ clerk@bottisham-pc.gov.uk - Tel: 07369248998

**DISTRICT COUNCILLORS**

CHARLOTTE CANE \_\_\_\_\_ charlotte.cane@eastcambs.gov.uk - Tel: 07976 607512

JOHN TRAPP \_\_\_\_\_ john.trapp@eastcambs.gov.uk - Tel: 01223 812120

**COUNTY COUNCILLOR**

ALAN SHARP \_\_\_\_\_ alan.sharp@cambridgeshire.gov.uk - Tel: 07794 292941

# Useful Information

<b>Bottisham Website:</b> .....	www.bottisham-pc.gov.uk
<b>Parish Council Chairman:</b> Jon Ogborn, jon.ogborn@bottisham-pc.gov.uk .....	
<b>Parish Council Clerk:</b> Sam Chambers-Turner, clerk@bottisham-pc.gov.uk .....	07369 248998
<b>Holy Trinity Church:</b> Vicar: Rev. Max Osborne max9@btinternet.com .....	01223 481187
Churchwarden: Stuart Field .....	01223 604019
<b>Roman Catholic Priest:</b> Monsignor Eugène Harkness. Parish of St Philip Howard .....	01223 211235
<b>RE:NEW/Lode Chapel:</b> Rev. Alan Brand .....	01223 812558
<b>Bottisham Surgery:</b> Enquiries and Appointments .....	810030
Out of Hours only - Urgentcare Cambridge .....	111
<b>Bottisham Library:</b> Library hours, <i>see advert previous page</i> .....	01223 812354
<b>Cambridgeshire Police HQ:</b> .....	01480 456111
<b>Cambridgeshire Police:</b> (NON-URGENT MATTERS) .....	ring 101
In EMERGENCIES .....	ring 999
<b>Local East Cambs Policing info:</b> www.cambs.police.uk/Neighbourhood-Policing/East-Cambs	
<b>NAAFI Break:</b> Gary Fairbairn .....	korum694@gmail.com
<b>Neighbourhood watch co-ordinator:</b> kevin.g.evans@ntlworld.com .....	01353 614892
<b>Bottisham Pharmacy:</b> .....	812321
<b>Bottisham Community Sports and Social Club:</b> Secretary Bev Clowes, Bottishamcasc@gmail.com .....	812063
<b>Bottisham Community Primary School:</b> .....	811235
<b>Bottisham Village College, School:</b> .....	811250
Evening Classes, Clubs and Youth Club Information .....	811372
<b>Bottisham W.I.:</b> Secretary - Jenn White • mrandjw@btinternet.com .....	811600
<b>Bottisham Scout Group:</b> Group Contact: Linda Jones .....	813040
<b>1st Bottisham Rainbows/1st Bottisham Brownies:</b> Kay Pearce .....	811055
<b>Girlguiding Bottisham District:</b> Cambs County office • www.cambseastguides.org.uk .....	01223 813917
<b>Bottisham &amp; District Gardening Club:</b> Secretary: Julia Green .....	811467
<b>Bottisham Bowling Club:</b> Peter Clowes, Sec., bottishambowlingclub@gmail.com .....	07756 431234
<b>Bottisham Carpet Bowls Club:</b> Nora Watson, nora@gandnwatson.uk .....	812121
<b>Bottisham Cricket Club:</b> Chairman: Will Allen, Chairman@bottlodecricket.co.uk .....	07713 007757
<b>Bottisham Youth Football Club:</b> Adam Bridgland, adambridgland@hotmail.com .....	07764 488599
<b>Bottisham Local Charities Trustees:</b> secretary - Jonathan Barrett .....	07920 425154
<b>Bottisham Pool Association:</b> Manager - Harry Bubb .....	811121
<b>Bottisham Royal British Legion Branch:</b> PoC, Peter Walker; .....	811402
www.Britishlegion.org.uk/branches/bottisham	
<b>Queen's Court Day Centre:</b> .....	811905
<b>East Cambridgeshire District Offices:</b> .....	01353 665555
<b>East Cambridgeshire District Councillors:</b>	
Charlotte Cane, 34 Swaffham Road, Reach .....	07976 607512
John Trapp, 104 Commercial End, Swaffham Bulbeck .....	01223 812120
<b>Cambridgeshire County Councillor:</b> Alan Sharp, Alan.sharp@cambridgeshire.gov.uk .....	01638 507485/07794292941
<b>MP for Constituency:</b> Charlotte Cane, MP, charlotte.cane.mp@parliament.uk	
<b>Cambridgeshire Trading Standards Helpdesk:</b> .....	0845 3030666
<b>Milton Road Tip:</b> Apr to Sept – Weekdays 9.00am-8.00pm: Weekends 9.00am-6.00pm .....	860674
Oct to Mar - 9.00am-4.00pm	
<b>CRESSET Editor:</b> email: BottishamCresset@gmail.com	
Treasurer, Advertising rates and payment: Rhona Walker, 94 High St .....	811402
Distribution: Ian & Helen Cole .....	812573
<b>Design/Artwork:</b> ONG (Old Newton Graphics) • www.codge.com .....	01449 675548
<b>Printing:</b> Falcon Printing Services, www.falconprinting.co.uk, jason@falconprintingservices.com .....	891286

**The Cresset:** While every effort is made to ensure accuracy we cannot accept liability for any mistakes or misprints. The views of, or any opinions expressed, are not those of the EDITOR. The Editor cannot accept any responsibility for statements made in advertisements



HILTON PARK

BARCHESTER HEALTHCARE

# Care as unique as you are



Making the move into care doesn't mean you have to lose who you are. We'll spend time getting to know you, and the people and things that are most important to you, so we can put the right care in place.

By gaining an understanding of your interests and passions too, we can support you to live happily, comfortably, and just the way you choose.

**You'll find all this and more at Hilton Park Care Home.**

**Call: 01223 659 832**

Bottisham, Cambridge, CB25 9BX

To find out how we can help you, visit: [barchester.com/HiltonPark1](https://www.barchester.com/HiltonPark1)  
Residential care • Nursing care • Respite care & short breaks

# E.C. AUTOCARE

(Est. 1980)



**SERVICING & REPAIRS**  
**Cars & Light Commercial**  
**Diesel & Petrol**



**MOT TESTING STATION**

**Servicing to all makes of Cars  
& Light Commercial**

**WE  
ARE STILL  
OPEN IN THE HIGH  
STREET FOR THE  
FORSEEABLE  
FUTURE**

- ENGINE MANAGEMENT DIAGNOSTICS**
- TYRE - BRAKES - EXHAUSTS**
- AIR CONDITIONING SERVICING**
- GEARBOX SPECIALISTS** MANUAL & AUTOMATIC

**FAST, FRIENDLY, FAMILY BUSINESS**

**56 HIGH STREET, BOTTISHAM**

Also at

**A1303 SERVICE STATION, BOTTISHAM**  
**(behind Brian McKay)**

**Tel.01223 811122 or 01223 812357**

